

Tools for Natural Resource Management and Planning

NCAC Informational Townhall: Natural Resources & Air, Water and Land Quality

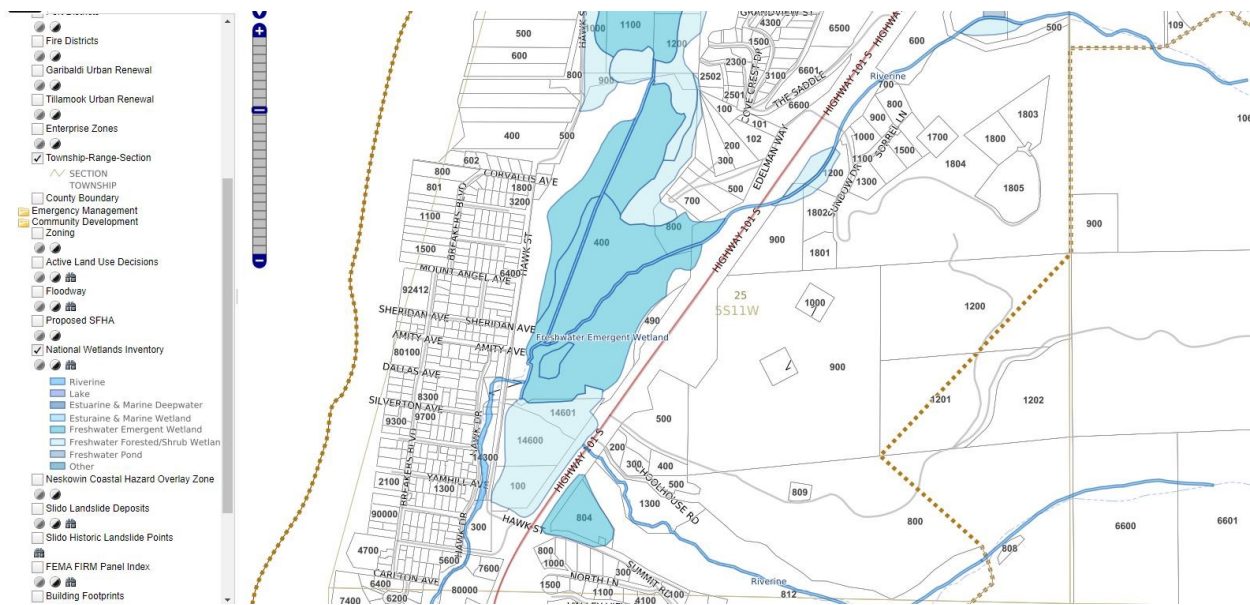
January 26th 2021

Access National Wetlands Inventory through Tillamook County Geomoose:

<http://tillamookcountymaps.co.tillamook.or.us/geomoose2/geomoose.html>

➔ Community Development ➔ National Wetlands Inventory

Click the “i” at the top of the map, then click the feature on the map you would like to learn about



This is a very powerful and easy-to-use tool. You can toggle other layers pertaining to zoning, emergency management, community development, transportation and more.

Fish Bearing Streams:

Oregonexplorer.info ➔ Tools ➔ Oregon Explorer Map Viewer ➔ Go To Layers

Check Animals and Plants ➔ Check Fish Distribution ➔ Check the ODFW fish layer you are interested in.

To measure habitat:

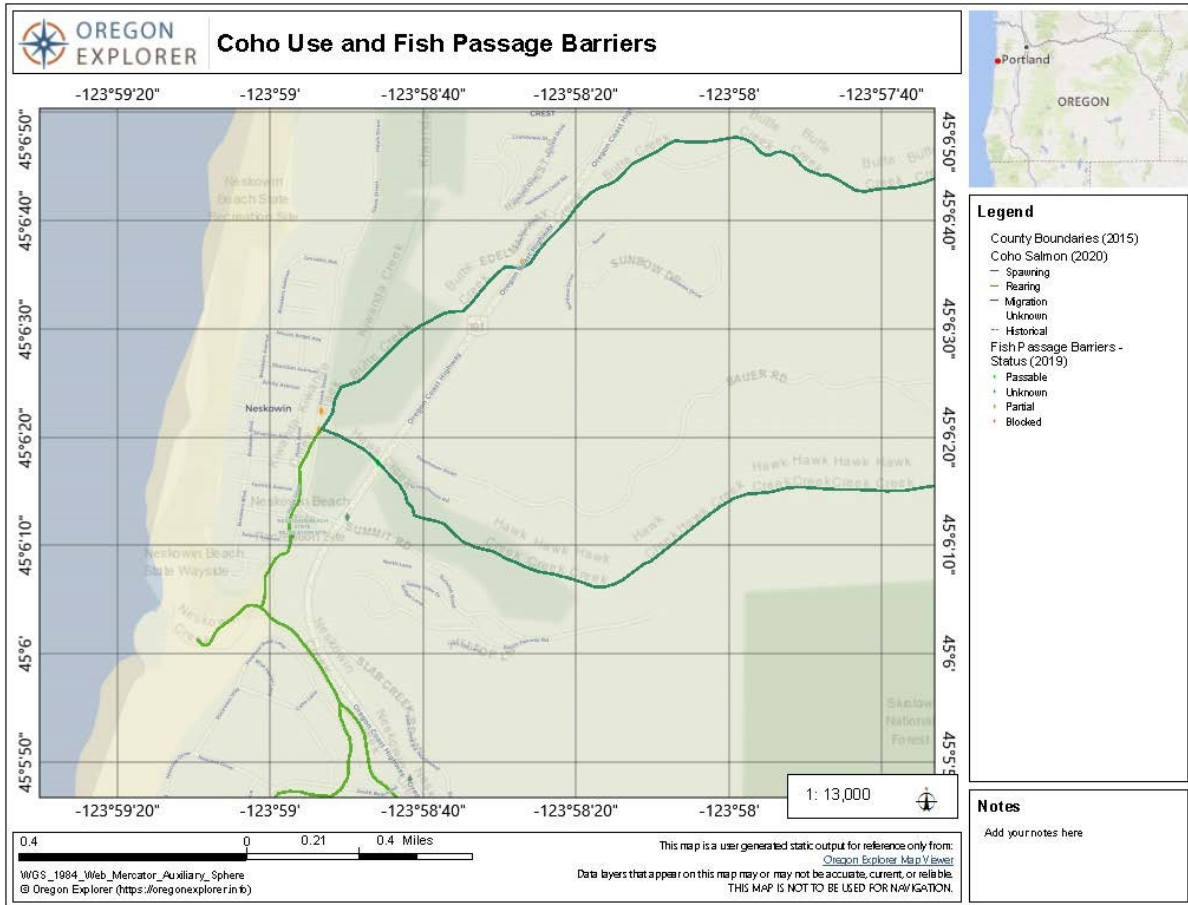
Click analysis ➔ Distance ➔ Use the tool to measure the length or area of habitat.

To look at fish passage barriers:

Fish barriers → Check Restoration → Check Fish Passage Barriers → Check the ODFW fish passage layer you are interested in.

To print a map on printer or PDF:

Create & Share → Print → Select your settings



Click the “i” at the top of the map, then click the feature on the map you would like to learn about.

Alternatively, you can use ODFW’s public facing map viewer:

https://nrimp.dfw.state.or.us/FHD_FPB_Viewer/index.html

Click the box on the upper right hand corner of the screen to access layers

GIS data can be found here: <https://nrimp.dfw.state.or.us/nrimp/default.aspx?pn=fishdistdata>

You can get a better overall picture of fish use by looking at both National Wetlands Inventory and ODFW’s fish bearing streams layer. If a wetland is surrounding/adjacent to a fish bearing stream, it is possible that fish use the wetland in addition to the stream. It is always better to consult ODFW for fish

use information as sometimes fish use is not listed or up-to-date. They also conduct regular fish surveys and can send you data. This data can be accessed on their website as well.

Attached Watershed Assessments/Analyses:

Neskowin Area Flooding and Fish Passage Assessment (2002)

Nestucca/Neskowin Watershed Assessment (1998)

Nestucca Bay National Wildlife Refuge Comprehensive Conservation Plan and Environmental Assessment (2012)

Salmon-Neskowin Watershed Analysis (1999)